

FLEXIBLE PROBE FOR TOP LINE AUTOCLAVES

PT-2-TLV & PT-2-TLV-PD

ALLOWS CONTROLLING THE
STERILIZATION CYCLE ACCORDING TO
THE TEMPERATURE OF THE LOAD

ACCESSORY



Flexible probe for Top line autoclaves

DESCRIPTION

+ PT-100 flexible probe recommended for monitoring the sterilization of liquid loads.



Must be installed at our factory. The TLV-DUAL, TLV-PD, TLV-FA and TLV-S Series autoclaves can incorporate a total of 2 flexible probes. All TLV-FA and TLV-DUAL Series models incorporate 1 flexible probe as standard.

CHARACTERISTICS

- **Probe length:** The probes have a length of 2 meters, designed to provide flexibility and ease of use in a variety of applications.
- **Adjustment and calibration:** The adjustment of the probes is managed directly from the autoclave's microprocessor. Only the administrator or users with special permissions can access calibration. For assistance, please contact our technical service.
- **Number of probes:** All Top line autoclaves allow the incorporation of a total of 2 flexible probes, adjusting to the specific requirements of each application.

AVAILABLE OPTIONS

There are four available references, each specific to different autoclave series. All options are presented below:

- **PT-2-TLV:** Compatible with TLV-S and TLV-FA Series autoclaves.
- **PT-2-TLV-PD:** Compatible with TLV-PD and TLV-DUAL Series autoclaves.

BENEFITS

Use of a single PT-100 flexible probe:

It allows monitoring the temperature of the liquid sample and initiating the sterilization phase precisely when the desired temperature is reached. Moreover, the installation of this accessory allows to set programs based on the F_0 value, optimizing the control of the lethality obtained and allowing to make flexible processes of identical lethality at different maximum temperatures.

Use of two PT-100 flexible probes:

Ideal for comparisons between different samples, especially if using containers of different sizes or placed in different positions (e.g. upper and lower levels). The sterilization cycle will not start until both samples reach the required temperature, ensuring that all elements of the load are properly processed.

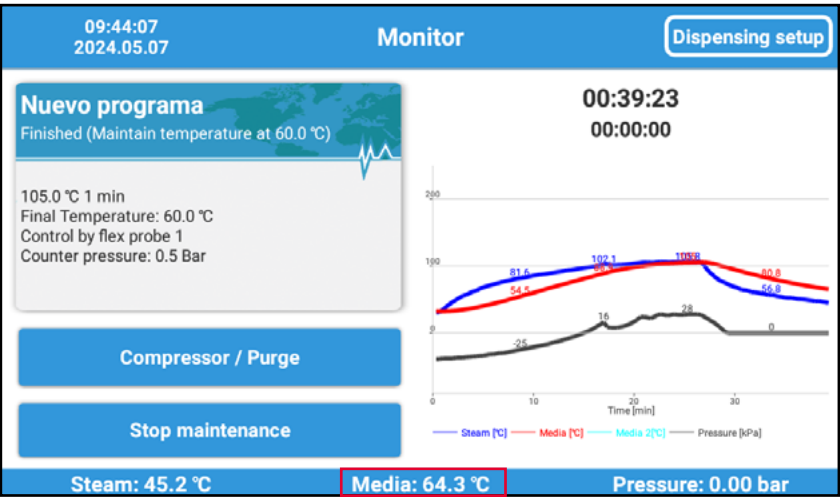
The end-of-cycle temperature will be regulated by the sample temperature. For equipment with preheating features, such as the TLV-PD or TLV-DUAL, this phase will always be controlled by the chamber probe. In the agar mode, the temperature control can be regulated by any of the probes.



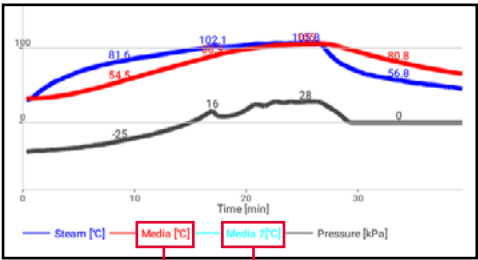
Flexible probe for Top line autoclaves

DISPLAY OF THE VALUES MEASURED BY THE FLEXIBLE PROBE

Controller screen



Temperature recorded by the flexible probe. Indicates the exact temperature of the medium.



Temperature recorded by the second flexible probe.

Temperature recorded by the first flexible probe.